

# Kapitalmarktanalyse

## Länderfokus: Indien



Stand: 05.04.2012

### Aktienindices

|                        | aktuell  | -1 Tag     | -1 Tag(%) | - 1 Jahr | -1 Jahr (%) | -3 Jahre (%) | -5 Jahre (%) | Gesch. KGV | Gesch. Gewinnrendite |
|------------------------|----------|------------|-----------|----------|-------------|--------------|--------------|------------|----------------------|
| Mumbai Sensex 30 Index | 17486,02 | ▼ 17597,42 | -0,63%    | 19686,82 | -11,18%     | 68,97%       | 36,01%       | 13,42      | 7,45%                |
| NSE S&P CNX NIFTY      | 5322,90  | ▼ 5358,50  | -0,66%    | 5910,05  | -9,93%      | 65,77%       | 41,87%       | 13,16      | 7,60%                |
| MSCI India             | 417,21   | ▼ 423,02   | -1,38%    | 537,70   | -22,41%     | 68,52%       | 12,55%       | negativ    |                      |

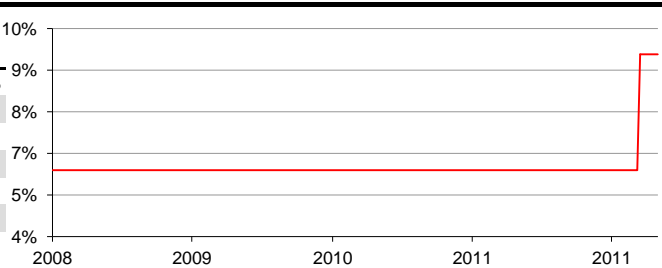
### Historische Wertentwicklung Aktien (MSCI India)



### Staatsanleihen

|          | aktuell | -1 Tag | -1 Tag(BP) | -1 Yr | -5 Yr |
|----------|---------|--------|------------|-------|-------|
| Leitzins | 9,50%   | 9,50%  | 0          | 6,00% | 6,00% |
| 1 Jahr   | 8,21% ▼ | 8,26%  | -5,3       | 7,49% |       |
| 3 Jahre  | 8,24% ▼ | 8,27%  | -2,4       | 7,69% |       |
| 5 Jahre  | 8,72% ▼ | 8,72%  | -0,8       | 7,88% |       |
| 10 Jahre | 8,78% ▲ | 8,78%  | 0,3        | 7,99% |       |

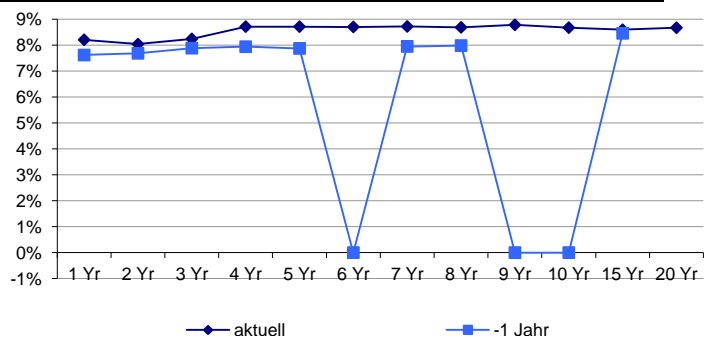
### Leitzins, historisch



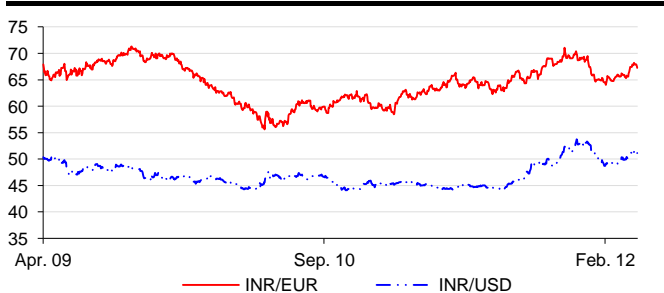
### Staatsanleihen, historisch



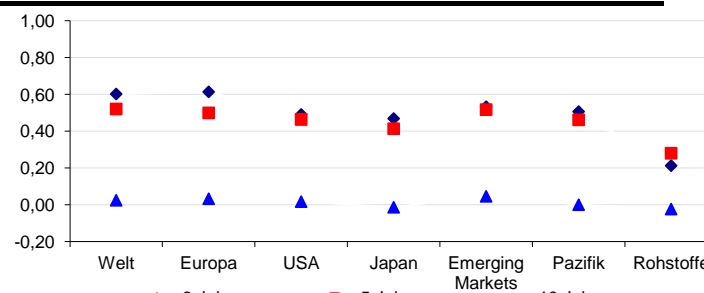
### Zinsstrukturkurven



### Wechselkurse (Preisnotierung)



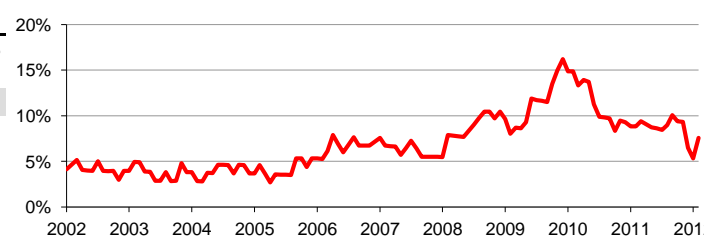
### Korrelation mit anderen Märkten



### Makroökonomische Kennziffern

|                   | aktuell* | 2005  | 2004  | 2003  |
|-------------------|----------|-------|-------|-------|
| Inflation (CPI)   | 7,57%    | 3,60% | 5,16% | 3,48% |
| BSP-Wachstumsrate | 6,90%    | 5,40% | 5,20% |       |

### Inflation



\*Bei Inflation und BSP-Wachstumsrate:

Zeitraum 12 Monate rückwirkend vom aktuellen Datum

Quelle: BCA Investment Research.

